

 Roland

COLOR SIGN MAKER

# Color CAMM PRO

by Roland DG Corporation

Model PC-600

# Print & Cut

One Step Print & Cut!





# True-to-Life Full-Color Printing and Precise Contour Cutting with One Machine

Now you can print six-color photo-quality images directly onto standard signage vinyl and precisely contour cut your design with a single machine. The ColorCAMM PRO PC-600 enables you to easily produce your own high-resolution 1200 dpi stickers, P-O-Ps, and heat transfer decals using wax or resin ribbons. Wax output offers photo-quality with fast throughput and lower running costs. Resin output has excellent light-fast, waterproof and scratch-resistant properties for both indoor and outdoor use. The PC-600 is the ideal sign-maker for in-store displays, event decorations, short run labels, apparel and informational signs in buildings. ColorCAMM PRO PC-600 — the versatile Print & Cut machine.

## Print & Cut

### Powerful Software RIP Included

Roland ColorChoice® (RCC) software RIP ships with every PC-600. RCC is a true Adobe® PostScript® 3™ multi-platform software RIP that works on either Windows or Mac<sup>(1)</sup>. This high-performance software RIP is specifically designed for printing and cutting functions. RCC is compatible with all commercially available graphics software<sup>(2)</sup> and includes a wide variety of convenient functions such as automatically laying out and printing multiple copies, rotating, mirroring, and block-printing<sup>(3)</sup> for extra long output. ICC profiles of Roland ribbons and recommended media are included to ensure accurate, consistent results every time.



(1) Windows® 95/98/Me, Windows NT® 4.0/2000/XP, and Mac OS 8.1 to 9.x.  
 (2) Adobe® Illustrator® 10, Adobe® Pagemaker® 6.5, CorelDRAW® 10, Quark XPress™ 4 etc.  
 (3) Instead of printing the total job in one color, rolling back the media and printing all of the second color as on earlier versions of the ColorCAMM, RCC allows you to set "block-print" to a designated distance (5 choices available) and the PC-600 will print every color (one at a time) in that distance before going on to the next block until the job is finished, whatever the length.

### Photorealistic Wax Inks

Wax output offers lower running costs and provides photo-quality images with fast throughput. Wax images are ideal for indoor use on standard paper signage<sup>(4)</sup> and for heat-transfers. A gloss finish ribbon is available as an option to give wax output a polished appearance.

### No lamination Required for Resin Inks

Resin inks have excellent UV stability and are waterproof and scratch resistant. In addition to long-lasting, vibrant color, resin inks are ideal for creating stickers and signs by printing directly onto appropriate signage vinyl<sup>(4)</sup> for outdoor use without lamination.

(4) Because of characteristics of thermal transfer printing, output may vary depending on the media selected.

### A Wide Variety of Spot Colors Available

For a wider range of spot color choices, the PC-600 now offers two new resin ribbons colors — orange and green. Other spot colors include red, blue and white, plus metallic gold and silver — available only with thermal transfer technology — to let you achieve special effects.



### Cost Saving Functions

The new ribbon-saver function<sup>(5)</sup> saves money on the cost of consumables. The ribbon doesn't move in non-print areas, saving an average of up to 20%<sup>(6)</sup> per color. (5) This function works when there is a minimum 70 mm (2.756 inch) space between printing areas. (6) In a comparison test conducted by Roland DG Corporation, size A4 (210 x 297mm) samples were printed by the PC-600 with the Ribbon Saver and by the PC-60 using CMYK resin ribbons and CMY wax ribbons. Results depend on image design and layout.

### Improved Speed and Quality

The PC-600 is up to 40%<sup>(7)</sup> faster in both printing and cutting compared to previous ColorCAMM models. The maximum printing speed is now 250 mm/sec (9.8 inches/sec) with wax ribbons. Utilizing Roland's state-of-the-art contour cutting technology, the PC-600 cutting speed is up to 300 mm/s (11.8 inches/sec) and 0.025 mm/step in precision. It also features a curve-smoothing function to cut arcs

perfectly and quickly, and an adjustable cutter force of 30 gf-200 gf to ensure precise cutting for a wide range of print media.

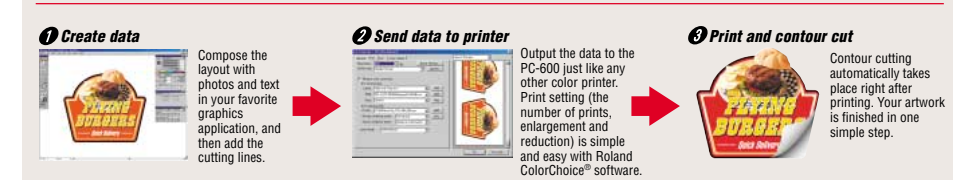
(7) In a comparison test conducted by Roland DG Corporation, size A4 (210 x 297mm) samples were printed at 600 dpi with CMY wax ribbons and then contour cut. Results depend on image design and layout.

### Easy-to-Use

With the ColorCAMM PRO, it's easy to switch between wax and resin ribbons for different jobs, utilizing resin ribbons for outdoor durability or wax ribbons for economical indoor and short-term signage. In addition, the ColorCAMM PRO PC-600 has several other convenient features. (1) Head cleaning takes place automatically for consistent color output at all times. (2) A newly designed push button panel makes settings quick and accurate. (3) An automatic sheet-cutter separates the output sheets. (4) The transparent front cover allows at-a-glance confirmation of current operation. (5) The media roll is held firmly in place to prevent it from becoming warped or loose. (6) A handy compartment holds spare blades, and (7) to conserve energy, the automatic power-off function turns the unit off when no data is received for a long period of time.



### Simple steps of Print & Cut operation with the PC-600



Heat transfers using wax ribbons for caps and shirts.

Attention-grabbing window displays.

Logos and graphics on cars.

Stickers for customers and team supporters.

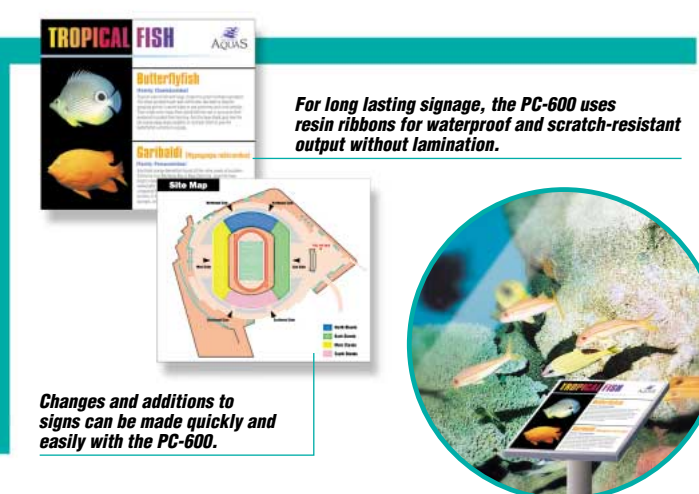
Ads and P-O-P displays.



A variety of stickers can be produced simply by changing colors or replacing pictures on basic designs.

The PC-600's resin inks are exceptionally resistant to water and scratching. Ideal for product labels.

Distinctive gold and silver resin ribbons — available only with the PC-600's thermal transfer technology — easily turn photos and graphics into attractive labels.



For long lasting signage, the PC-600 uses resin ribbons for waterproof and scratch-resistant output without lamination.

Changes and additions to signs can be made quickly and easily with the PC-600.



Garments to suit any event.

Badges with a logo or photo.

Short run stickers in various colors, shapes and sizes are far less expensive than offset printing.

Even the smallest letters are easily created with the PC-600's high resolution 1200 dpi.



COLOR SIGN MAKER  
**ColorCAMM PRO**  
 by Roland DG Corporation

**Model PC-600**



# Major Features of the ColorCAMM PRO

- 1200 dpi high-resolution printing and precise contour cutting combined in a single machine.
- Total throughput enhanced up to 40% compared to earlier ColorCAMMs.
- Significant savings in running costs.
- Direct printing onto vinyl media.
- Superior weather and scratch resistance using resin-based inks. No lamination necessary.
- Optimized ease of use and maintenance-free design.
- Powerful yet easy-to-use Roland ColorChoice®, Adobe® PostScript® 3™ multi-platform software RIP included with every PC-600.

## Specifications

Model	PC-600
Mechanism	Media-movement method, Thermal-transfer, Automatic cartridge-changing type
Acceptable media width	50 - 610 mm (2 - 24")
Maximum work area	571.6 mm x 24,998 mm (22-1/2" x 984-1/8") * This may be restricted by the program
Acceptable media thickness	0.23 - 0.06 mm (0.00906 - 0.00237")
Number of installed cartridges	6 pieces
Cutter force	30 - 200 gf
Cutting speed	10 - 300 mm/sec. (0.393 - 11.811"/sec)
Printing speed	Wax : Max.252 mm/sec. (9.921"/sec), Resin : Max.100 mm/sec. (3.937"/sec)
Cutting resolution (software resolution)	0.025 mm/step (0.000984"/step)
Printing resolution	1,200 dpi (carriage-movement direction) x 600 dpi, 600 dpi x 600 dpi
Cutting accuracy (distance accuracy)	Less than ±0.3 % of distance traveled or ±0.3 mm (±0.0118"), whichever is greater
Registration between printing & cutting	Less than ±0.3 mm (±0.0118") (Excluding expansion or contraction of the media, and excluding times when material is been reloaded)
Interface	Bidirectional parallel interface (compliant with IEEE 1284 : nibble mode)
Memory	2 Mbytes
Power consumption	Printing / Cutting mode Maximum : 1.2 A / 100 - 240 V ±10 % 50/60 Hz Standby mode Maximum : 0.3 A / 100 - 240 V ±10 % 50/60 Hz
Acoustic noise level	Printing/Cutting mode: less than 65 dB (A) Standby mode: less than 40 dB (A) (According to ISO7779)
Dimensions (with stand)	1125 mm (W) x 756 mm (D) x 1134 mm (H) (44-5/16" (W) x 29-13/16" (D) x 44-11/16" (H)) When cover is opening: 1125 mm (W) x 756 mm (D) x 1226 mm (H) (44-5/16" (W) x 29-13/16" (D) x 48-5/16" (H))
Weight (with stand)	47 kg (103.6 lb.)
Operating temperature	15 - 30 degree Celsius (59 - 86 degree Fahrenheit)
Operating humidity	35 - 70 % (non-condensing)
Accessories	Power Cord, thermal transfer ribbon cartridge (resin type: C, M, Y, K 1pce. each), blade (ZEC-U1005, 1pce.) blade holder(XD-CH3), material for test cuts, alignment tool, replacement blade for slitting knife, dust cover, tensioner, cleaning sheet, head cleaner, cleaning pad, PC-600 DRIVER for Windows® 98/95, Roland ColorChoice® CD-ROM, user's manual, quick reference guide, Roland ColorChoice® installation guide, notes on usage

## Options

Thermal Transfer Ribbon Cartridge (Resin)		
Process Color	Cyan	CR-MR2-CY
	Magenta	CR-MR2-MG
	Yellow	CR-MR2-YE
	Black	CR-MR2-BK
Spot Color	Orange	CR-MR2-OR
	Green	CR-MR2-GR
	Red	CR-MR-RD
	Blue	CR-MR-BL
	Gold	CR-MR-GL
	Silver	CR-MR-SL
	White	CR-MR-WH

Thermal Transfer Ribbon Cartridge (Wax)		
Process Color	Cyan	CR-MW-CY
	Magenta	CR-MW-MG
	Yellow	CR-MW-YE
	Black	CR-MW-BK
Gloss Finish	—	CR-MW2-GF

Replacement Blades	ZEC-U1005
	ZEC-U5025

Blade Holder	XD-CH3
--------------	--------

Roland reserves the right to make changes in specifications, materials or accessories without notice. Your actual output may vary. For optimum output quality, periodic maintenance to critical components may be required. Please contact your Roland dealer for details. No guarantee or warranty is implied other than expressly stated. Roland shall not be liable for any incidental or consequential damages, whether foreseeable or not, caused by defects in such products.

\*COLORCHOICE is registered in the U.S. Patent Office. Adobe, PostScript, PostScript3 and the PostScript logo are trademarks of Adobe Systems, Inc. Windows is a registered trademark of Microsoft Corporation. Macintosh is a trademark of Apple Computer, Inc. All other trademarks are the property of their respective owners.



**AUTHORIZED DEALER:**

Printed in Japan. RDG90060 '02 MAY. E-3 G-S